



## SPARE PARTS & ACCESSORIES

# SINGLE ELECTRIC BREAST PUMP

## PRODUCT NUMBER



**PRODUCT CODE:** 53401  
**DESCRIPTION:** White Valve x 2  
**COST (£ GBP):** 0.65



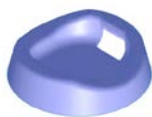
**PRODUCT CODE:** 53451  
**DESCRIPTION:** 160ml Container - Milk Storage Bottle x 1  
**COST (£ GBP):** 1.47



**PRODUCT CODE:** 50408  
**DESCRIPTION:** Comfort Fit Breast Cushion - Standard x 1  
**COST (£ GBP):** 1.27



**PRODUCT CODE:** 53410  
**DESCRIPTION:** Diaphragm Cap x 1  
**COST (£ GBP):** 0.65



**PRODUCT CODE:** 53452  
**DESCRIPTION:** Bottle Holder x 1  
**COST (£ GBP):** 0.98



**PRODUCT CODE:** 50419  
**DESCRIPTION:** Comfort Fit Breast Cushion - Large x 1  
**COST (£ GBP):** 1.32



**PRODUCT CODE:** 53450  
**DESCRIPTION:** Container Ring & Disc x 1  
**COST (£ GBP):** 0.91



**PRODUCT CODE:** 53453  
**DESCRIPTION:** Pump Connector x 1  
**COST (£ GBP):** 0.60



**PRODUCT CODE:** 53402  
**DESCRIPTION:** Diaphragm x 1  
**COST (£ GBP):** 1.40



**PRODUCT CODE:** 54100  
**DESCRIPTION:** Tubing 800mm  
**COST (£ GBP):** 1.07



**PRODUCT CODE:** 53454  
**DESCRIPTION:** Breast Cushion Body x 1  
**COST (£ GBP):** 0.93